

# Visit GLOUCESTER

## DISCOVER GLOUCESTER AUTUMN DAYS, WEEKENDS & STAYCATIONS IN GLOUCESTER

Autumn in Gloucester is a wonderful blend of history, nature, and community. Whether you're wandering through the historic docks, enjoying local flavours at the wide variety of eateries, or soaking in the beauty of the green spaces, there's something for everyone to enjoy. Here is a selection of things to see, do and visit during the chillier months. So, wrap up warm, grab your camera, and immerse yourself in the vibrant autumn atmosphere of our charming city!



© Kevin Lewis

# DAY 1

## FIND YOURSELF IN NATURE

### MORNING OPTIONS

**A**utumn is the perfect time to explore Gloucester's Parks and Green Spaces, offering scenic walking trails, where you can enjoy the stunning autumnal colours. Grab a coffee and a book, and soak in the peaceful atmosphere or take a brisk walk to enjoy the cooler air.

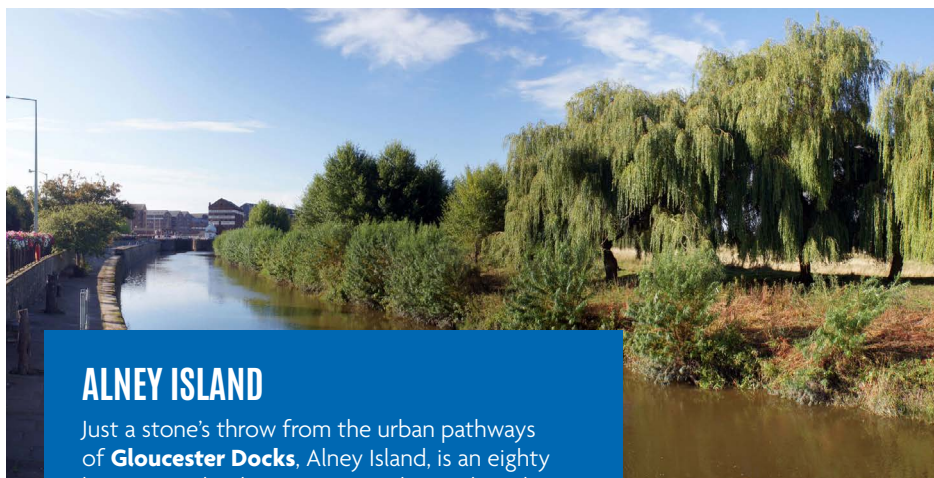
#### ROBINSWOOD HILL

Take the opportunity to enjoy the changing leaves and autumn air by taking a walk up Robinswood Hill. A country park since 1972, Robinswood Hill offers wildflower meadows, woodlands, way-marked trails, orchard ponds, and sites of historical and scientific importance such as wells and quarries, as well as spectacular views of the Severn Bridge, the Malvern Hills, and the Black Mountains. The **Robinswood Hill Café** is open 7 days a week, serving hot drinks, pastries, and cakes.



#### PAINSWICK ROCOCO GARDEN

The UK's only surviving rococo garden offers the chance to get away from the hustle and bustle of the city, and to get up close and personal with nature. The autumn months bring a crescendo of colour to many varieties of flower in the garden, as well as the changing colours of the autumn leaves.



#### ALNEY ISLAND

Just a stone's throw from the urban pathways of **Gloucester Docks**, Alney Island, is an eighty hectare wetland nature reserve located on the banks of the **River Severn**. The land is managed by grazing rare breed cattle, and wildlife includes orchids, waterfowl, raptors, amphibians, wading birds and many species of insect, including dragonflies and butterflies, a real slice of natural beauty within the city.

#### GLOUCESTER & SHARPNESS CANAL WALK

Once the broadest and deepest canal in the world, Gloucester & Sharpness Canal provides a stunning canal walk. Beginning in **Gloucester Docks**, the walk is **16 miles long**, and provides views which stretch across the Severn Estuary, the Forest of Dean, and the Cotswolds.

#### BARNWOOD ARBORETUM

A little further from the city centre, Barnwood Arboretum provides a quiet escape to nature in the middle of the suburbs. A local **nature reserve**, the arboretum provides a habitat for birds, insects, and small mammals, and is grazed by cattle and sheep.

#### OVER FARM

Over Farm is a working farm with an award-winning farm shop, which sells farm-grown produce, local meats, homemade treats, and a variety of local artisanal food and drink. The farm also has a café, serving everything from hot drinks and food to smoothies and cakes. During the month of October, the farm is open for you to pick your own pumpkins.





## AFTERNOON OPTIONS - TAKE IN A SHOW

### GLOUCESTER GUILDHALL

With a reputation as **'The County's Liveliest Venue'**, Gloucester Guildhall offers concerts, film screenings, exhibitions, theatre, comedy shows and more. With such a variety of events, there's sure to be something for everyone this autumn.

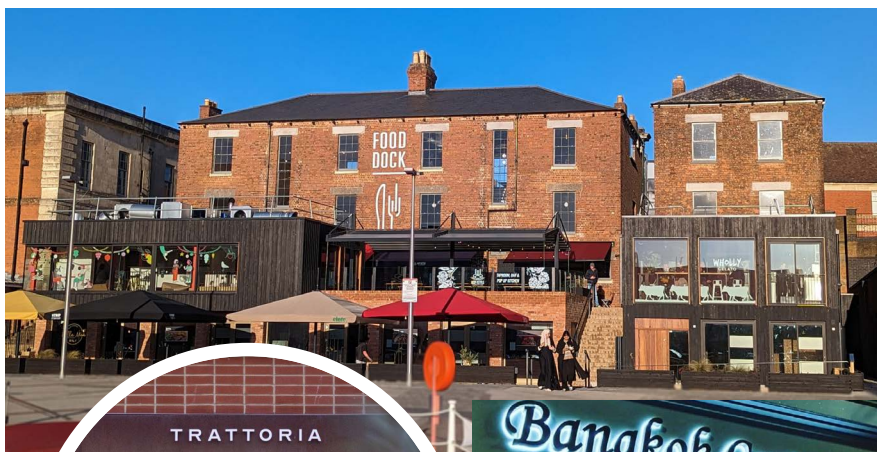
### SHERBORNE CINEMA

Why not take some time to relax and watch a film at The Sherborne? Originally built in **1880**, and restored in 2014, The Sherborne is a unique, independent, art-deco cinema just outside the city centre.



### CAFÉ RENÉ

With a ceiling lined with old wine bottles, Café René provides a unique and cosy space to enjoy traditional pub food and a variety of drinks. In addition to this, Café René is also a live music venue, with performances from a variety of local performers.



## SAVOUR SEASONAL FLAVOURS

Autumn brings a bounty of delicious flavours, and Gloucester's culinary scene embraces the season wholeheartedly. Warm up with a hot drink and a sweet treat at one of Gloucester's charming cafés.

Places like **Mister's Café**, **The March Hare**, **The Comfy Pew**, and **Café Corretto** all provide cosy atmospheres perfect for curling up with a book or people-watching. Enjoy a slice of cake or a delicious lunch while you relax away from the rain.

There are plenty of places for grab and go delights whilst you are exploring the city, **Jane's Pantry** and **Farmhouse Deli** offer a vast range of homemade pastries and sandwiches. Or, let one of the delicious restaurants do the cooking for you, whilst you catch up with friends and family.

So many to mention, but a few to try are **Gloucester Food Dock**, the **Coal Kitchen**, **Bangkok Canteen** and **Settebello**.



# DAY 2

## IMMERSE YOURSELF IN HISTORY & CULTURE

### MORNING OPTIONS

#### GLoucester Cathedral

A spectacular building, Gloucester Cathedral offers the opportunity to observe one thousand years of architectural styles. Walk in **Harry Potter's** footsteps in the cloisters, or experience one of the best views of the Cathedral in the **Tribune Gallery**. **The Monk's Kitchen** café is open daily, providing a range of eat-in and takeaway options.



#### GLoucester Civic Trust Tours

If you're looking to find out more about Gloucester's rich history, the **Gloucester Civic Trust's Guided Walks** are the perfect way to do so. Lasting approximately an hour and a half, the tours will enable you to discover two thousand years of Gloucester's history, and you will have the opportunity to visit a medieval galleried inn, discover where **Parliament** was held, and hear the stories of some of Gloucester's key historical figures, among many other things.



#### BLACKFRIARS PRIORY

Originally founded in **1239**, Blackfriars is the most complete example of a medieval **Dominican priory** in Britain. With a rich and varied history following its original use, the priory is now open for you to experience, including a courtyard garden and the **Scriptorium**, which is the oldest and most well-preserved medieval library in Britain.



#### LLANTHONY SECUNDA PRIORY

Llanthony Secunda Priory is the remains of a once large and important **Augustinian Priory** which was founded in **1136** after Canons fled from Llanthony Priory in Monmouthshire, Wales. The site has since been classified as a scheduled monument with several Grade I and II listed buildings that played a significant role in Gloucester's history for over 900 years.



## AFTERNOON OPTIONS - FIND YOUR COMPETITIVE STREAK

There are so many activities to stretch your muscles, your reactions, and your brain! Guaranteed to keep you warm and mostly dry, whilst having lots of fun!

### NINJA WARRIOR UK ADVENTURE PARK GLOUCESTER

Gear up for the ultimate thrill-seeking adventure unlike anything Gloucestershire has ever seen! This revolutionary indoor adventure park combines fitness and fun for all the family with activities for all ages and abilities including the famous **Warped Wall**.

Ninja Warrior UK Adventure Park allows you to fully explore the park and tackle the huge selection of obstacles which vary in difficulty level, allowing you to progress through to become a Ninja Warrior!



### GLOUCESTER SKI & SNOWBOARD CENTRE

Gloucester Ski & Snowboard Centre is one of the **longest outdoor artificial ski slopes** in the UK for skiing and snowboarding fun. There are activities for all abilities from various tuition courses, recreational skiing or boarding, and even tubing in inflatable rings.

### PUTT PUTT NOODLE

Try something different with an evening at Putt Putt Noodle, an exciting new concept in **adventure golf**, boasting eighteen holes across two courses, each themed with different aspects of Asian culture, from cherry blossoms to crouching tigers and hidden dragons. Golfers who work up an appetite can order from an extensive menu of sushi and noodle dishes, alongside craft beers and elaborate cocktails.

### TRAPPED ESCAPE ROOMS

If you fancy yourself as a bit of a detective, if you like problem solving, or if you are just simply competitive, then a session at Trapped Escape Rooms is the place for you to escape the drizzle!

With up to six in a team, and different scenarios to choose, get your sleuth on to **solve the clues** and try to escape within the time. That which seems obvious, is not always the case!

### JDR KARTING

Gloucester's premier indoor karting arena! The circuit is approximately 300m long with various circuit features. There are three extremely exciting **High-Speed Banking** corners, which greatly aid overtaking opportunities. These corners coupled with a uniform tarmac surface provide a fast track for sensational high-speed racing.



### VRXPRIENCE

Virtual Reality is a fun, exciting and a very **accessible experience** for people of all ages and abilities. VRXPRIENCE aim to offer VR for everyone, from easy to get into soothing experiences and trying out the latest VR games, right through to thrilling fully immersive competitive VR racing, rollercoasters and working together in VR Escape Rooms! There is something for everyone!

### THE WAREHOUSE CLIMBING CENTRE

Housed in an old Victorian Warehouse, near Gloucester's Historic Docks, spread over **five floors**, they offer a wide range of climbing experiences, suited to all ages. Whether you are an experienced climber, a complete novice, you'll be sure of a wonderful experience.



### TENPIN GLOUCESTER

Tenpin Gloucester has everything you need for an enjoyable day or night out. Whether it's bowling, karaoke, laser tag, soft play, or **Houdini's** escape rooms – the fun will keep rolling. Don't forget the fabulous party packages too, including bowling, karaoke, laser tag, and soft play for the kids. Why not make singing in the shower a thing of the past and have a popstar or rockstar karaoke party with friends. Great for adults and kids alike!

# DAY 3

## SHOP 'TIL YOU DROP

WISHING YOU A  
**MERRY**  
Christmas

BAR

### MORNING OPTIONS

#### INDEPENDENT RETAILERS

With lots of independent shops, selling all manner of unique, beautiful, and often locally sourced gifts, and now being the time to support our high streets more than ever, you'll find something for everyone. There is never a better excuse to shop than in the run up to **Christmas** and there are some unique gifts to be found in the city.

#### KING'S WALK & EASTGATE SHOPPING CENTRES

Both centres are in the heart of the city, offering a variety of shops & eateries from high street favourites to specialist independents. In addition to retail options, both centres often host community events and **activities**.

#### GLOUCESTER QUAYS

Perfect for a shopping day, Gloucester Quays is the city's thriving leisure quarter which features an outlet mall, with outlets including **Dune London**, **AllSaints**,

**Berghaus**, **Joules**, and **Jack Wills** among many others. Once you've finished shopping (or if you need to refuel!), there is a variety of restaurants to choose from, including **Côte**, **Five Guys**, **Portivo Lounge** and **Wagamama**. Gloucester Quays is also home to a multi-screen cinema.

#### ORCHARD STREET MARKET

Discover the finest local food, drink, art, design, vintage, and modern craft at the Orchard Street Market, located in **Gloucester Quays**, all while enjoying live music. The Orchard Street Market is held on the **first weekend** of every month between **March and October**.

#### GLOUCESTER FARMERS' MARKET

Held every **Friday** from **9am to 3pm** at the cross in the heart of the city, Gloucester Farmers' Market provides you with the opportunity to sample some of the finest local produce, including seasonal fruits and vegetables, baked goods, meat and poultry, cheeses, eggs, and street food.



### ADDED AUTUMNAL DELIGHTS

#### GLOUCESTER RUGBY

Don your cherry and white scarf and head down to **Kingsholm**, just a few strides from the city centre, to watch a match this autumn. Gloucester Rugby is one of the oldest and most iconic English Rugby Clubs, with a rich history dating back to **1873**. Kingsholm is not just a place to watch rugby, it is a community and a way of life for many.

#### GLOUCESTER QUAYS OUTDOOR ICE RINK

Nestled within the picturesque surroundings of Gloucester Docks, the Gloucester Quays Outdoor Ice Rink is the perfect place to glide into the festive

season here in Gloucester. Open every year between **November and January**, it is the perfect place to wrap up warm and make magical memories with family and friends!

#### LANTERN PARADE & CHRISTMAS LIGHT SWITCH-ON

Gloucester's Lantern Parade & Christmas Light Switch-on takes place each year, normally around the **second Saturday in November**. With a different theme each year, lanterns made by local artists and school children, parade through the city, whilst the Christmas lights glisten above, marking the start of the festive season in the city! The parade is followed by the **Tree of Light** Switch-on and a service at **Gloucester Cathedral**.

## AFTERNOON OPTIONS - MUSE THE MUSEUMS

Gloucester's museums offer a fascinating glimpse into the city's history and culture. With exhibitions that highlight local life, crafts, and traditions, along with both national and international exhibitions, they are a great indoor activity on cooler autumn days.



### MUSEUM OF GLOUCESTER

Found within the City of Gloucester is an internationally important collection of treasures of over **750,000** objects. Marvel at the story of the city's origins as a Roman settlement and its subsequent development through the Dark Ages and Medieval period, you'll also find art collections, exhibitions, and interactive experiences for all ages. Entry to the museum is by donation, simply pay what you think!

### FOLK OF GLOUCESTER

The wonderful Folk of Gloucester on **Westgate Street** is one of the city's most iconic and historic buildings. The floorboards still squeak, and history reeks from every crevice, your tour guide may even be in costume ... with six hundred years of history to explore, we would highly recommend!

### SOLDIERS OF GLOUCESTERSHIRE

The museum in **Gloucester Docks**, displays the remarkable story of the Soldiers of Gloucestershire who have served their regiments since 1694. It depicts their courage, humour, their



traditions, and their sacrifices in exciting and colourful exhibitions for all ages to enjoy.

### NATIONAL WATERWAYS MUSEUM

Also in the Docks is the National Waterways Museum, housed in the old **Llanthony Warehouse** in the heart of what once was the bustling **Gloucester Docks**, the museum will take you on a whole new journey, charting the 200-year history of the docks and the **Gloucester & Sharpness Canal**. With fun, interactive exhibits, a café, and a museum shop, you'll discover the stories of the communities that lived and continue to thrive here. Your ticket allows you to return as many times as you like in **12 months**.

### THE HOUSE OF THE TAILOR OF GLOUCESTER

**Beatrix Potter** created one of her most loved characters here (**The Tailor of Gloucester**). This charming shop and museum housed the same building that

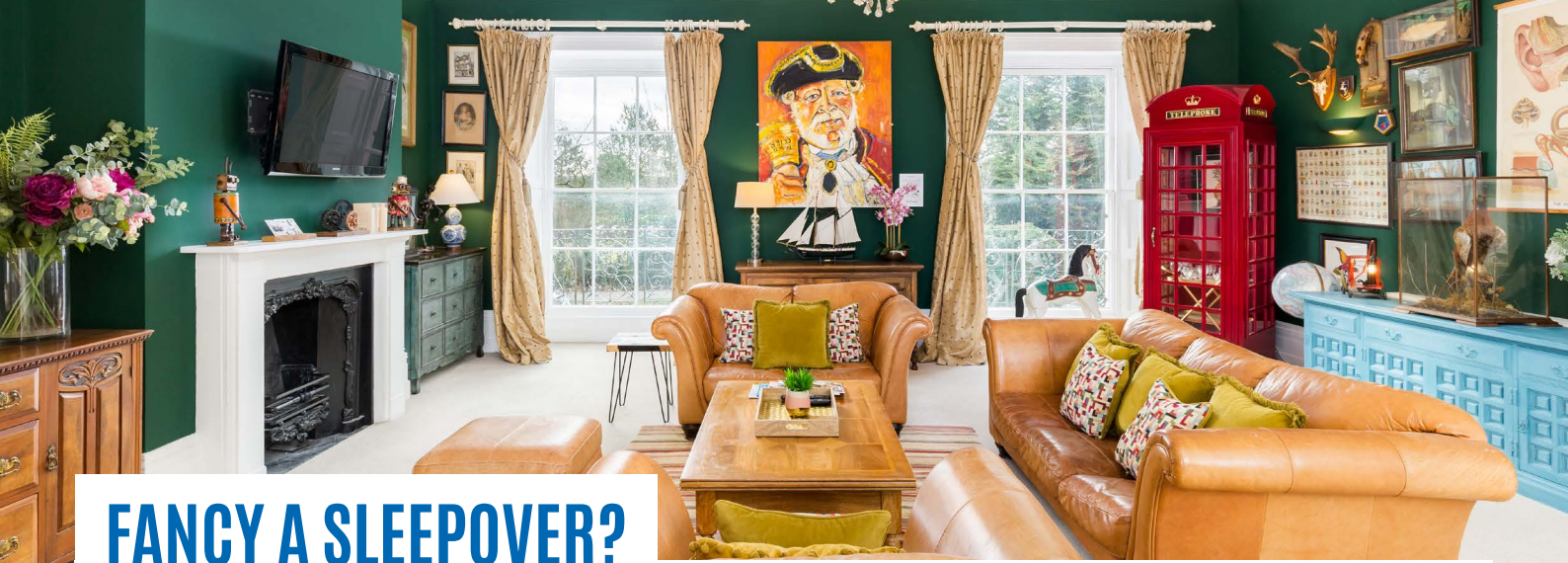
inspired the very story and is used in the illustrations, and is open to the public every day. You can enjoy viewing the tailor's kitchen as well as a variety of displays which bring her favourite story to life. Entry is **free**, and the magical shop sells a range of attractive souvenirs.

### NATURE IN ART

The world's first museum and art gallery dedicated to art inspired by nature, Nature in Art holds an unrivalled collection of fine, decorative, and applied art. The museum is encased in the magnificent Georgian mansion, **Wallsworth Hall**, which is featured in Simon Jenkins's book *England's 1000 Best Houses*.

### JET AGE MUSEUM

The Jet Age Museum is home to a unique collection of historic aircraft and artefacts charting the history of Gloucestershire's rich aviation heritage, located just a short bus ride from the city. Its purpose is to preserve the county's aviation history and is the only place in the world that examples of the three **Gloucester Aircraft Company** jets can be seen together.



# FANCY A SLEEPOVER?

## LV14 SULA LIGHTSHIP

Based in **Gloucester Docks**, the LV14 Sula Lightship is the UK's only stay aboard lightship, with a luxury guest suite for up to four adults. If you venture outside you will find SULA's best kept secret – a private Sun Deck with panoramic views, where guests can sit back, relax, drink in hand, and soak up the quayside atmosphere!

## THE JUDGES LODGINGS

Ideal for short breaks, The Judges Lodgings is one of the city's finest boutique hotels offering serviced apartments. Nestled in a **quiet corner** of Gloucester city centre, this is a peaceful retreat and the perfect place to revive, refresh and feel good, inside and out!

## MERCURE GLOUCESTER BOWDEN HALL

In the picturesque outskirts of Gloucester, you will find Mercure Gloucester Bowden Hall surrounded by acres of **beautiful grounds**. Their onsite restaurant offers a mouth-watering selection of food with gorgeous views of the lawns and lake, a perfect country retreat to base yourselves whilst visiting Gloucester.

## HOLIDAY INN GLOUCESTER - CHELTENHAM

A smart **modern hotel** just outside of Gloucester city centre with top-of-the-line conference facilities, a bar, restaurant, swimming pool and more. You can enjoy a tasty breakfast or all-day dining and catch up with friends over a drink in the open lobby. Kids stay and eat free!

## HATTON COURT HOTEL

Bordering the 'Cotswold Way,' Hatton Court Hotel is an independent boutique hotel in the village **Upton St Leonards** with easy access to the city. This quirky hotel offers a unique venue for a stay, meetings, events, and conferences.

## HATHERLEY MANOR HOTEL & SPA

Located within a short distance of Gloucester, this charming 17th century manor house is the ideal base for exploring the city. Traditional features blend with contemporary furnishing to create a relaxed chic environment. **The Spa at Hatherley Manor** is inspired by their Cotswold heritage and is dedicated to natural wellbeing, offering spa days, spa breaks, treatments, and memberships.

## THE THATCH INN

Located in **Quedgeley** and built in the 13th century when the population was just twenty, the Thatch Inn is one of the county's oldest and historical buildings still full of its original features and character. The Thatch Inn is ideally located for guests wishing to enjoy the city!

## GLOUCESTER ROBINSWOOD, BW SIGNATURE COLLECTION BY BEST WESTERN

This **4\* AA Graded** hotel is set just 2 miles from Gloucester city centre with an extensive leisure club including gym, swimming pool, spa pool, sauna, and steam room. It is also within walking distance of Gloucester Ski & Snowboard Centre and Gloucester Golf Club.

## THE LOCK HOUSE

A delightful detached former lock keeper's house, occupying a unique location at the entrance to the historic **Gloucester Docks**. This beautifully presented house offers cosy and relaxing accommodation and is ideally situated for exploring this interesting and varied part of the country.

For further information, advice, itinerary ideas, images and contact details please email: [visitgloucester@gloucester.gov.uk](mailto:visitgloucester@gloucester.gov.uk)



Map © Cotswolds Tourism



**SHARE YOUR EXPERIENCE WITH OTHERS**

[f Gloucester](https://www.facebook.com/Gloucester)  
[@ visitgloucester](https://www.instagram.com/visitgloucester)  
[x visitgloucester](https://www.tiktok.com/@visitgloucester)  
[#visitgloucester](https://www.tiktok.com/@visitgloucester)

**FOR MORE INFORMATION**

[www.visitgloucester.co.uk](http://www.visitgloucester.co.uk)